

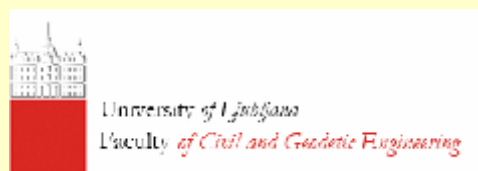


LIFE10NAT/SI/142

# LJUBLJANICA CONNECTS

Restoration of the Ljubljana River corridor and improvement of the river's flow regime

Katarina ZABRET



The River Connectivity Conference

Ljubljana, 22 – 23 October 2015

# THE LJUBLJANICA RIVER



- Ljubljanica River is 42 km long, total basin area is 1884 km<sup>2</sup> of which 1100 km<sup>2</sup> is karstic.
- It is known also as River with seven names – because of mainly karstic basin river has a large number of streams with different names.
- It is the deepest Slovenian River with a section which is 8 m deep.



The last river spring near Vrhnika



The river in the city Ljubljana



Ljubljanica in Zalog – lower part

# PROJECT ACTIONS



## TARGETED SPECIES



Danube Salmon  
(*Hucho hucho*)



Danube Roach  
(*Rutilus pigus*)



Striped Chub  
(*Leuciscus souffia*)

## PROJECT TASKS



Concrete restoration  
actions



Monitoring of fish  
migration



Monitoring of  
ecohydrological  
conditions



Collaboration with  
general public

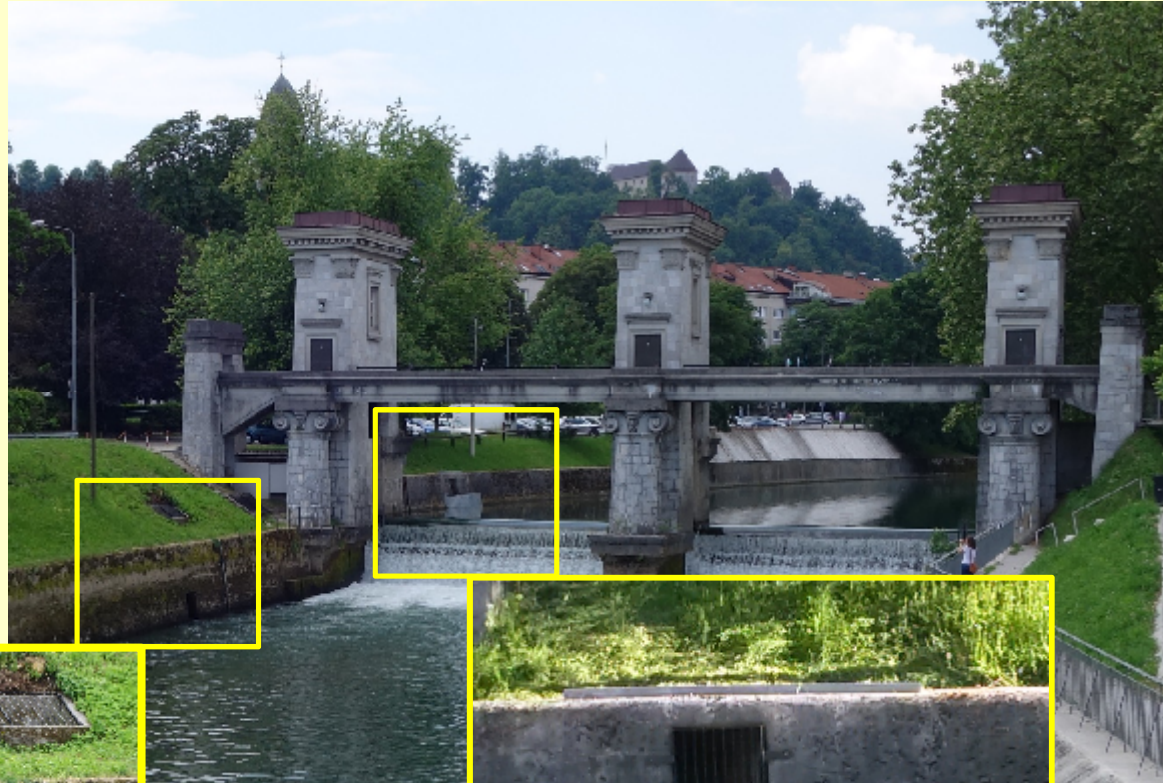
# SILL IN ZALOG



# SILL IN ZALOG



# FISH PASS AMBROŽEV TRG



# FISH PASS AMBROŽEV TRG



# FISH PASS AMBROŽEV TRG





# FISH PASS FUŽINE



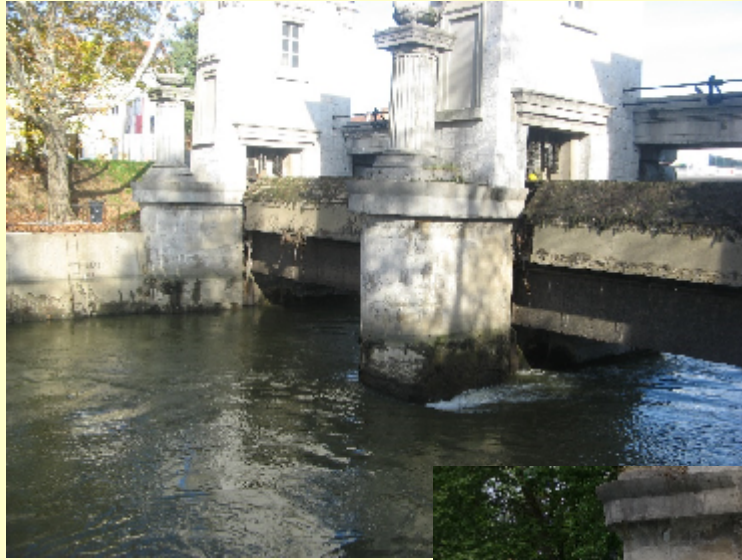
Videokopter.si



# FISH PASS FUŽINE



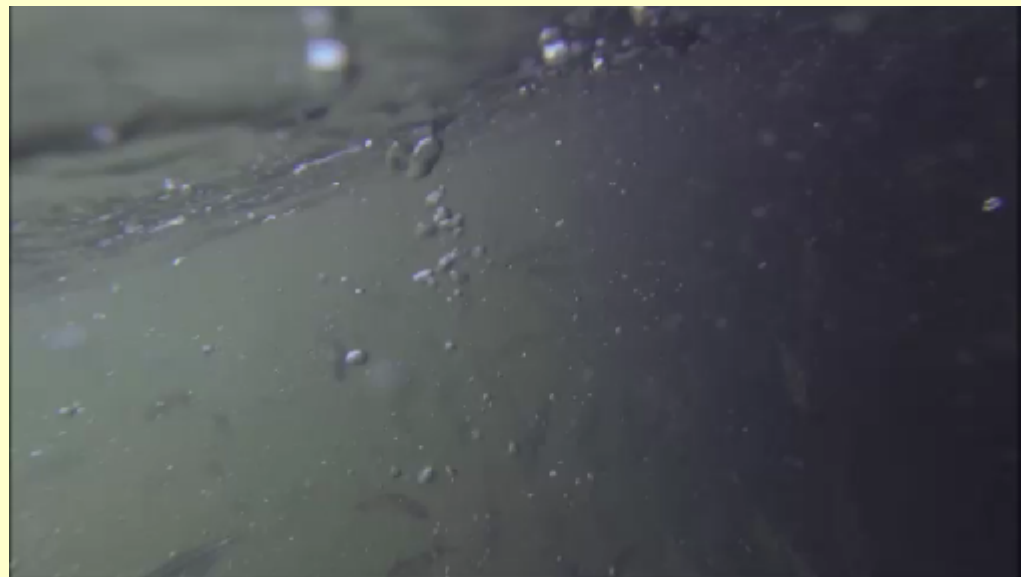
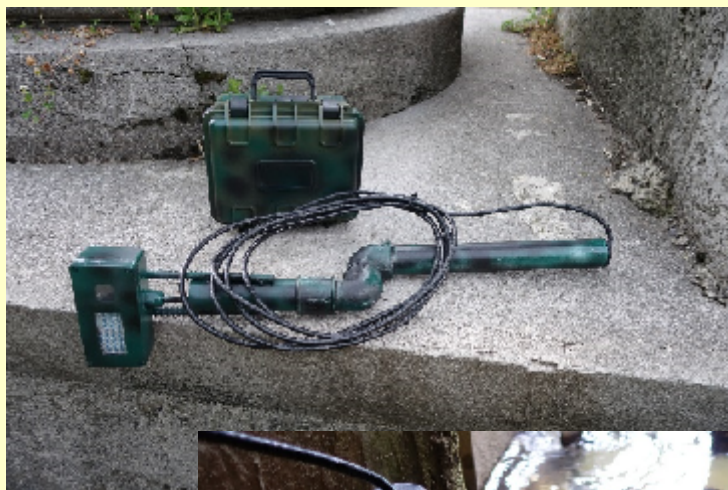
# AMBROŽEV TRG GATE



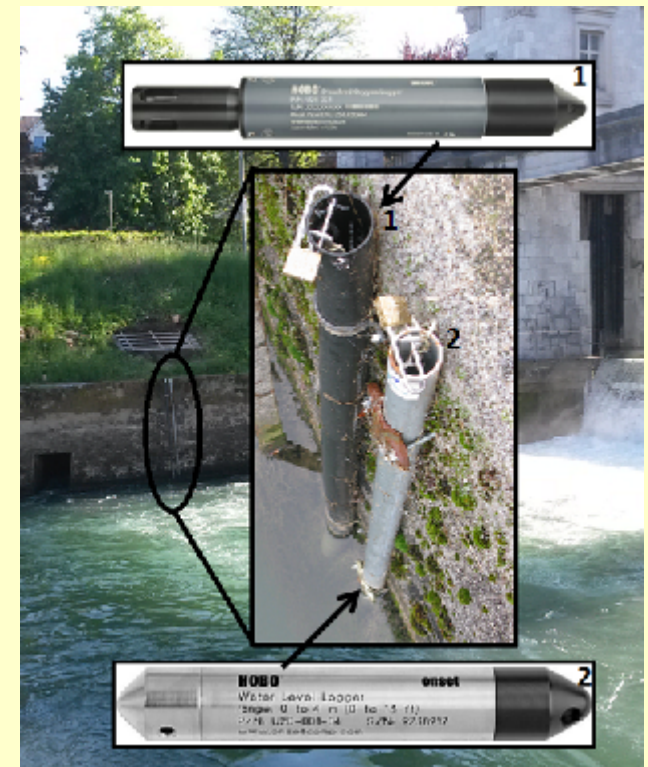
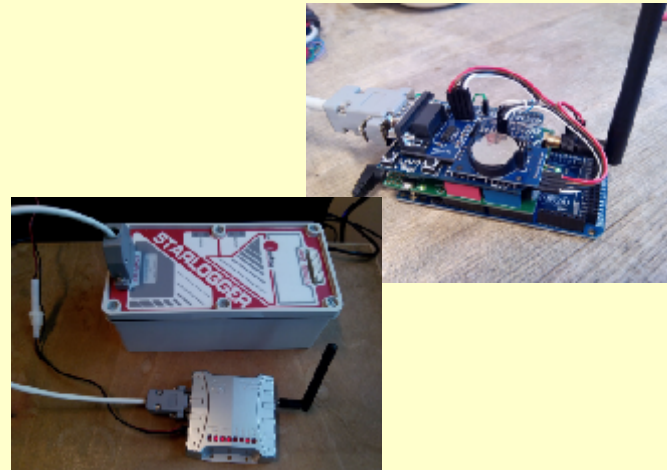
# MONITORING OF FISH MIGRATION - VIE



# MONITORING OF FISH MIGRATION - camera



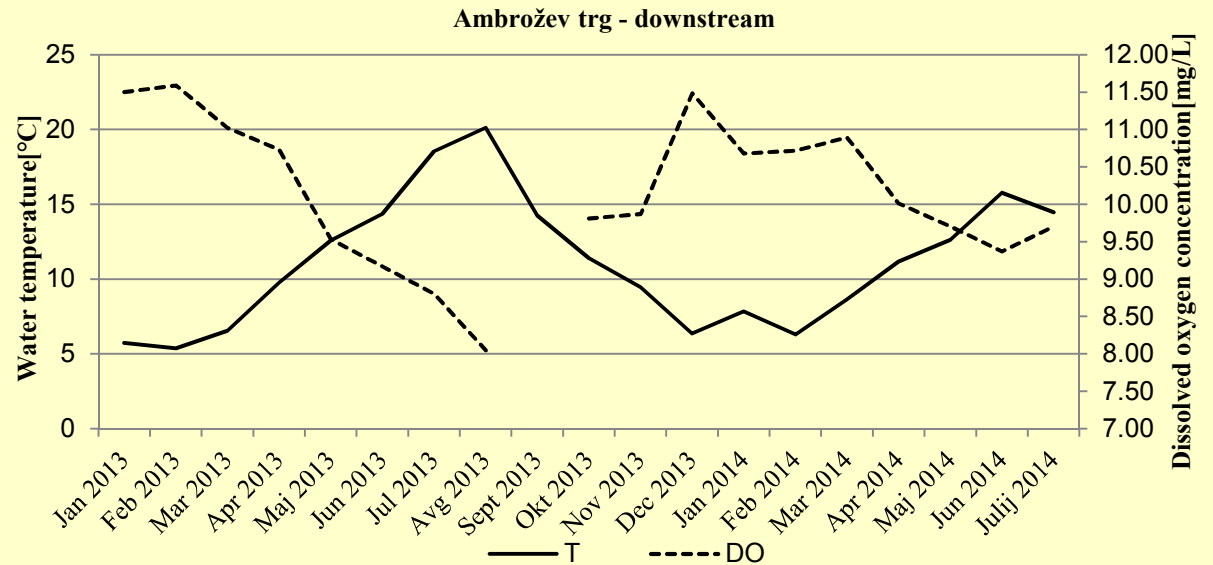
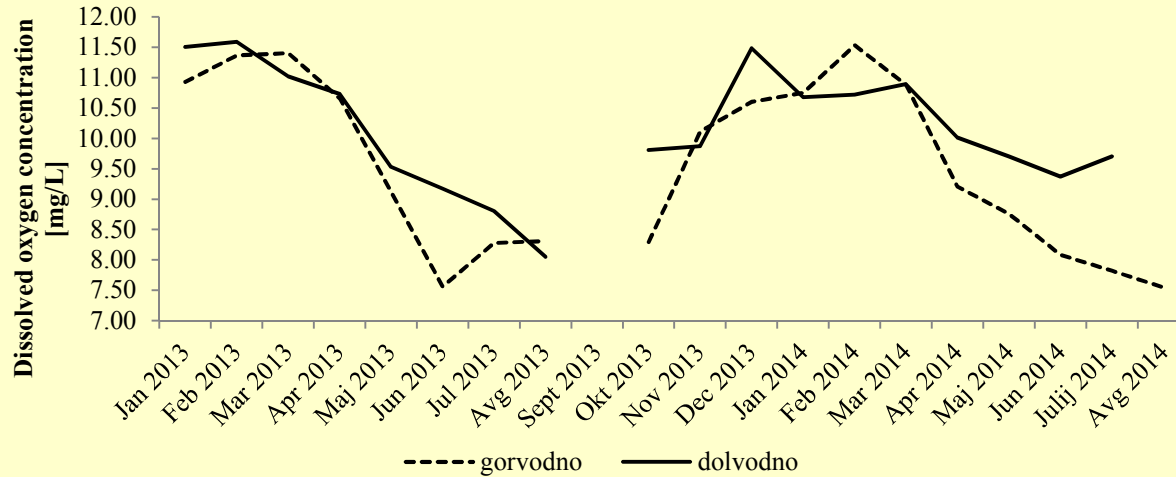
# ECOHYDROLOGICAL MONITORING



# ECOHYDROLOGICAL MONITORING



# ECOHYDROLOGICAL MONITORING





# COLLABORATION WITH GENERAL PUBLIC



# INSTEAD OF CONCLUSIONS ...

